

**Garz & Fricke**  
***FTL-Automaten-Steuerungen***  
***G&F FTL VMC Jofemar***



Impressum

Herausgeber: Garz & Fricke GmbH  
Tempowerkring 2, 21079 Hamburg  
Deutschland

Tel: +49 40 – 79 18 99 30  
Fax: +49 40 – 79 18 99 39

© 2003-2015, Alle Rechte vorbehalten

**Inhaltsverzeichnis**

***G&F FTL VMC Jofemar*..... 1**

**1 Allgemeines zum Dokument ..... 4**

1.1 Geltungsbereich ..... 4

1.2 Änderungsübersicht Dokument..... 4

**2 Automatentypen / Schachtkonfigurationen ..... 5**

2.1 Jofemar Goya 8..... 6

2.2 Jofemar Goya 12-14..... 7

2.3 Jofemar Goya 12-16..... 8

2.4 Jofemar Goya 12-19..... 9

2.5 Jofemar Goya 12+4-19 ..... 10

2.6 Jofemar Goya 16-19..... 11

2.7 Jofemar Goya 16-23..... 12

2.8 Jofemar Goya 16-25..... 13

2.9 Jofemar Lux 22-19 ..... 14

2.10 Jofemar Lux 22-25 ..... 15

2.11 Jofemar Goya 22-28..... 16

2.12 Jofemar Baja 25-25..... 17

2.13 Jofemar Goya 32..... 18

# 1 Allgemeines zum Dokument

## 1.1 Geltungsbereich

Diese Dokumentation ist gültig für die Softwareversion **V4.03** und **V4.06**

## 1.2 Änderungsübersicht Dokument

Revision	Datum	Seiten	Änderung	Autor
1.1	01.06.2015	alle	Dokument erstellt	Eich
1.2	14.07.2015	13-15	Angepasst an neue Softwareversion V4.06	Eich

## 2 Automatentypen / Schachtkonfigurationen

Die nachfolgenden Darstellungen bilden die beim Booten einstellbaren Automatentypen ab.

**Bootmenü** Bezeichnet den Parameter, mit dem die Auswahl des entsprechenden Automatentypen im Bootmenü vorgenommen wird und setzt sich wie folgt zusammen.

**Kennzeichen Gehäusetyp**

**Anzahl der Wahlen**

**Goya 16**

-

**19**

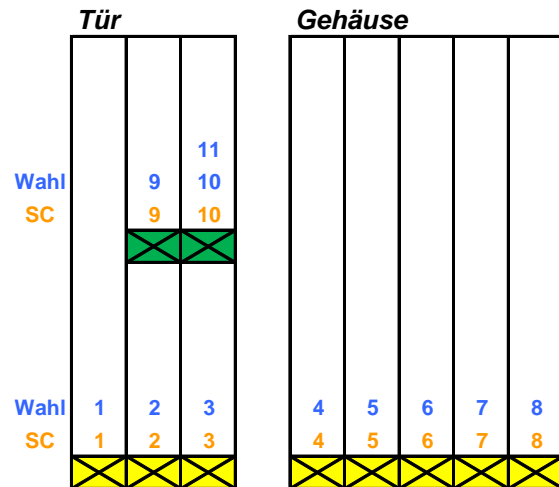
Neben der **Wahl-/Schachtzuordnung** wird ebenfalls die Tastatur definiert:



- Tastenfeld mit Rückgabetaste und ohne Blindtasten.
- Tastenfeld mit Rückgabetaste und zwei Blindtasten.
- Tastenfeld mit Rückgabetaste und sieben Blindtasten.

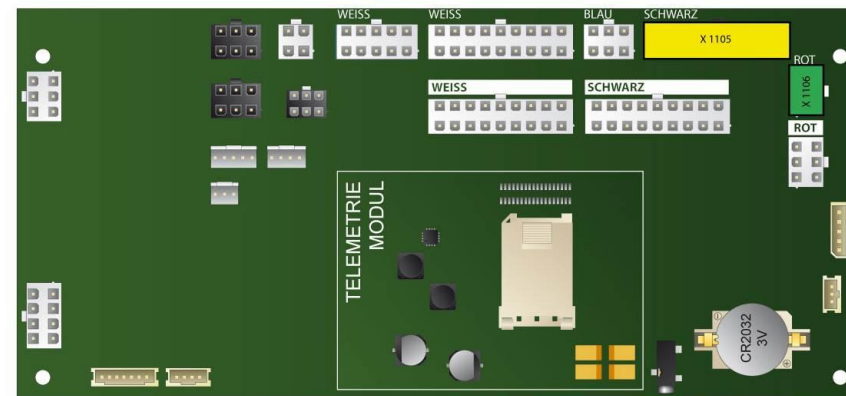
## 2.1 Jofemar Goya 8

**Bootmenü**  
**Anzahl der Auswerfer** 10  
**Anzahl der Wahlmöglichkeiten** 11  
**Tastatur** 12 Tasten, davon 1x Rückgabetaste

### Goya 8

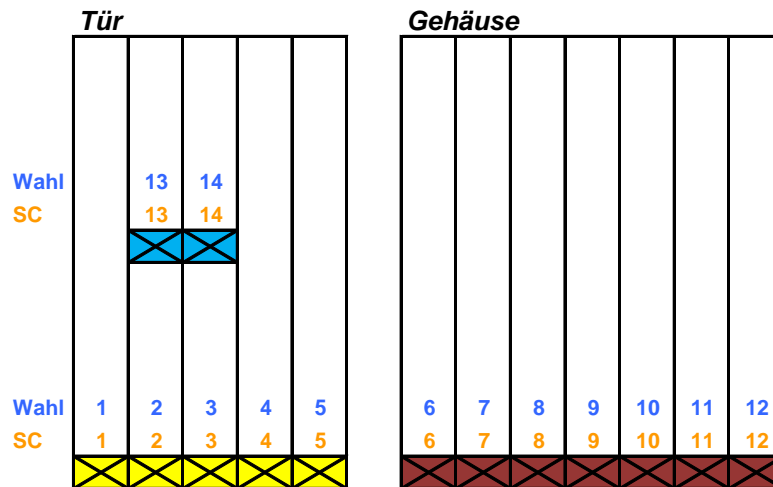





-  Motor, Anschluß an Stecker X 1105
-  Motor, Anschluß an Stecker X 1106

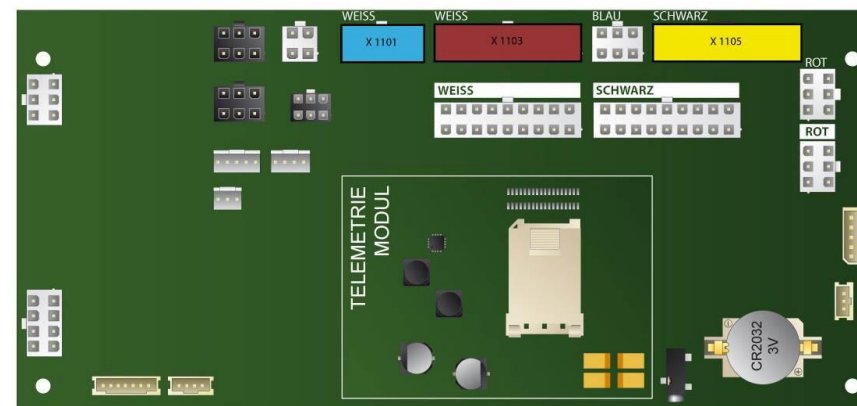


## 2.2 Jofemar Goya 12-14

**Bootmenü**  
**Anzahl der Auswerfer**            Goya 12-14            14  
**Anzahl der Wahlmöglichkeiten**    14  
**Tastatur**                                15 Tasten, davon 1x Rückgabetaste

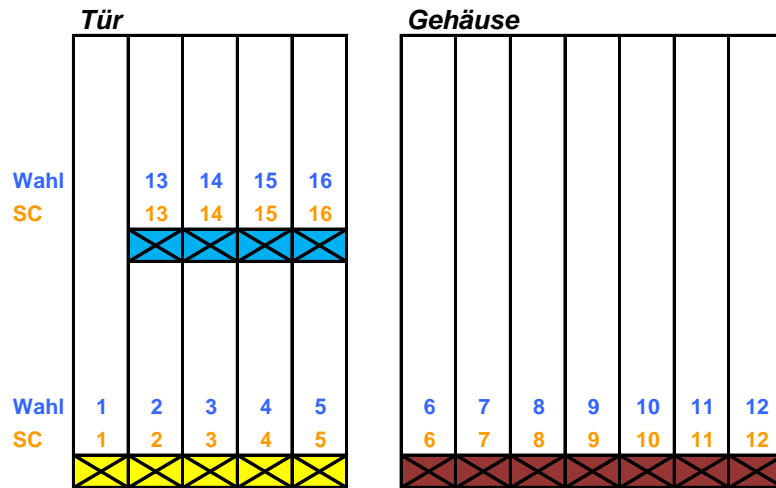





-  Motor, Anschluß an Stecker X 1101
-  Motor, Anschluß an Stecker X 1103
-  Motor, Anschluß an Stecker X 1105

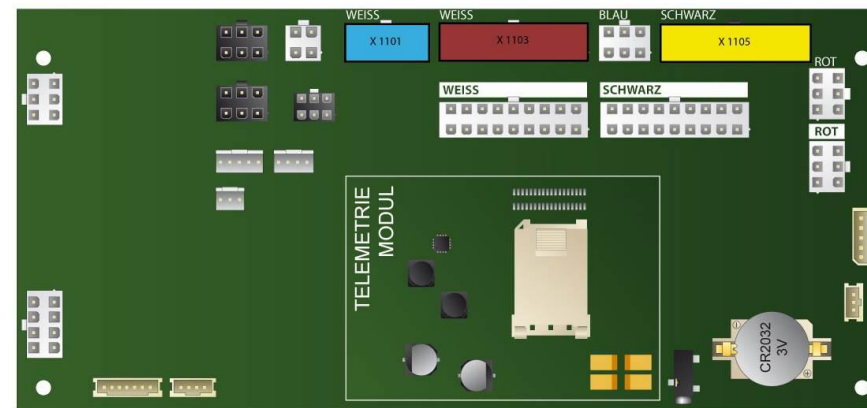


**2.3 Jofemar Goya 12-16**

**Bootmenü** **Goya 12-16**  
**Anzahl der Auswerfer** 16  
**Anzahl der Wahlmöglichkeiten** 16  
**Tastatur** 17 Tasten, davon 1x Rückgabetaste



-  Motor, Anschluß an Stecker X 1101
-  Motor, Anschluß an Stecker X 1103
-  Motor, Anschluß an Stecker X 1105

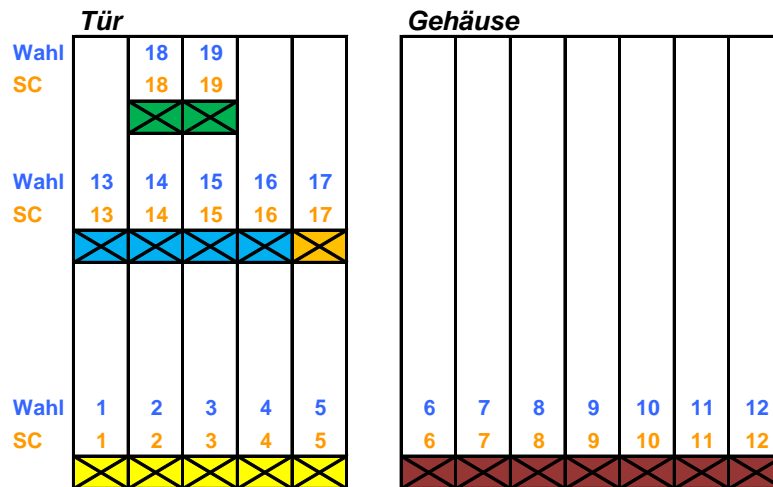









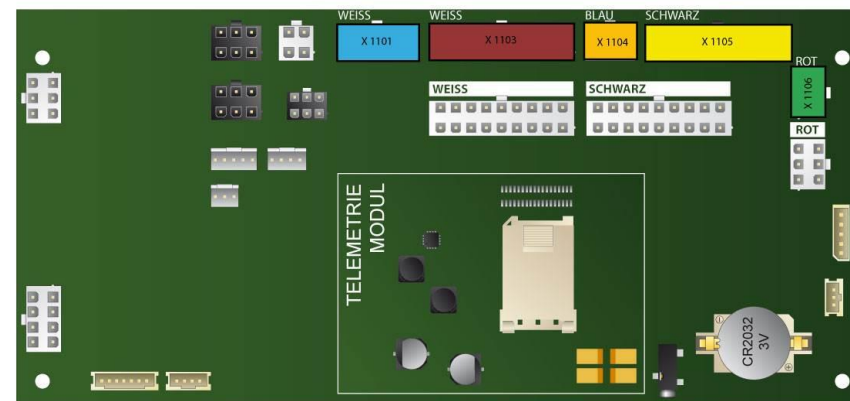
## 2.4 Jofemar Goya 12-19

**Bootmenü**  
**Anzahl der Auswerfer** 19  
**Anzahl der Wahlmöglichkeiten** 19  
**Tastatur** 20 Tasten, davon 1x Rückgabetaste

**Goya 12-19**



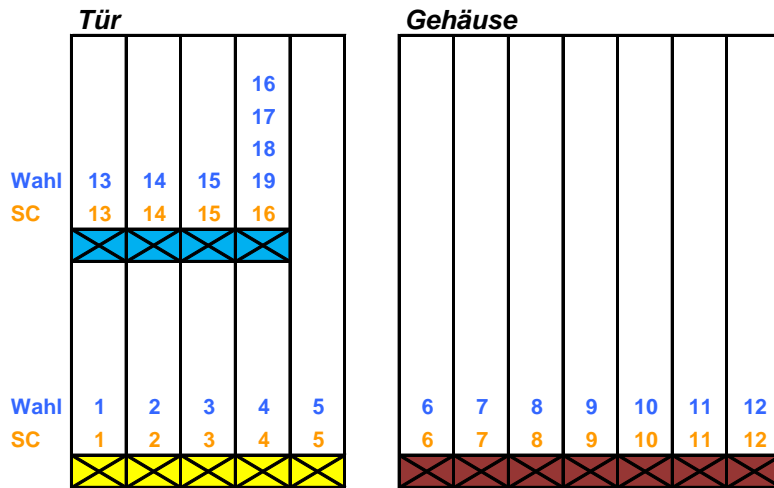
-  Motor, Anschluß an Stecker X 1101
-  Motor, Anschluß an Stecker X 1103
-  Motor, Anschluß an Stecker X 1104
-  Motor, Anschluß an Stecker X 1105
-  Motor, Anschluß an Stecker X 1106






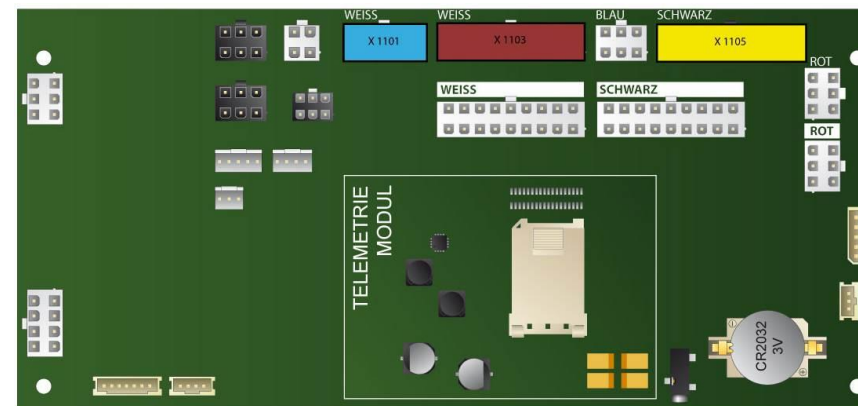
**2.5 Jofemar Goya 12+4-19**

**Bootmenü**  
**Anzahl der Auswerfer** 16  
**Anzahl der Wahlmöglichkeiten** 19  
**Tastatur** 20 Tasten, davon 1x Rückgabetaste

**Goya 12+4-19**



-  Motor, Anschluß an Stecker X 1101
-  Motor, Anschluß an Stecker X 1103
-  Motor, Anschluß an Stecker X 1105



**2.6 Jofemar Goya 16-19**

**Bootmenü**

Anzahl der Auswerfer 19

Anzahl der Wahlmöglichkeiten 19

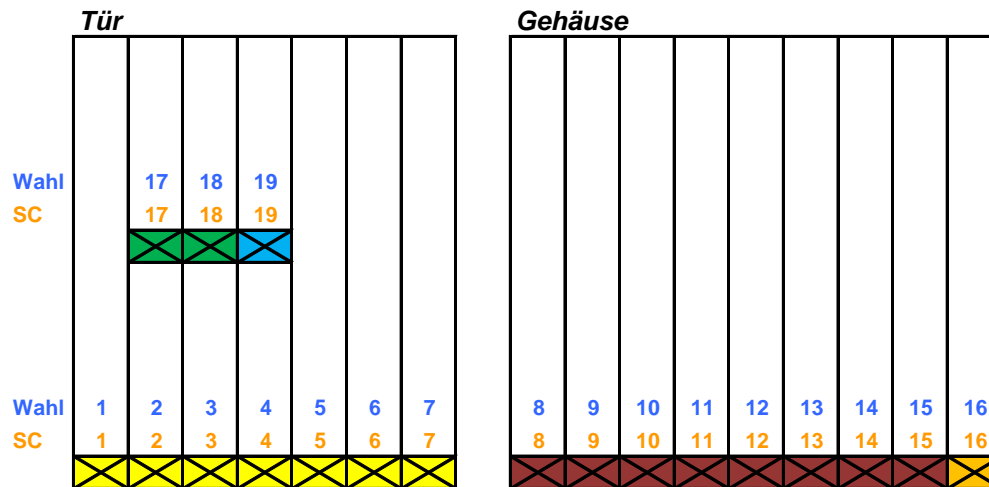
Tastatur






**Goya 16-19**

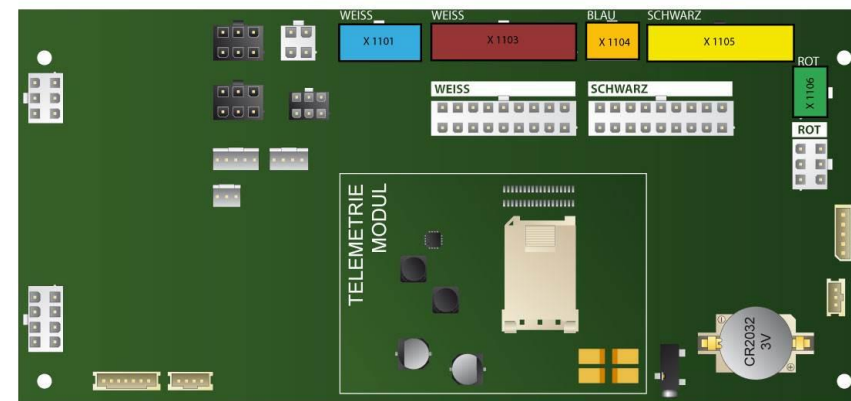
19

19

20 Tasten, davon 1x Rückgabetaste

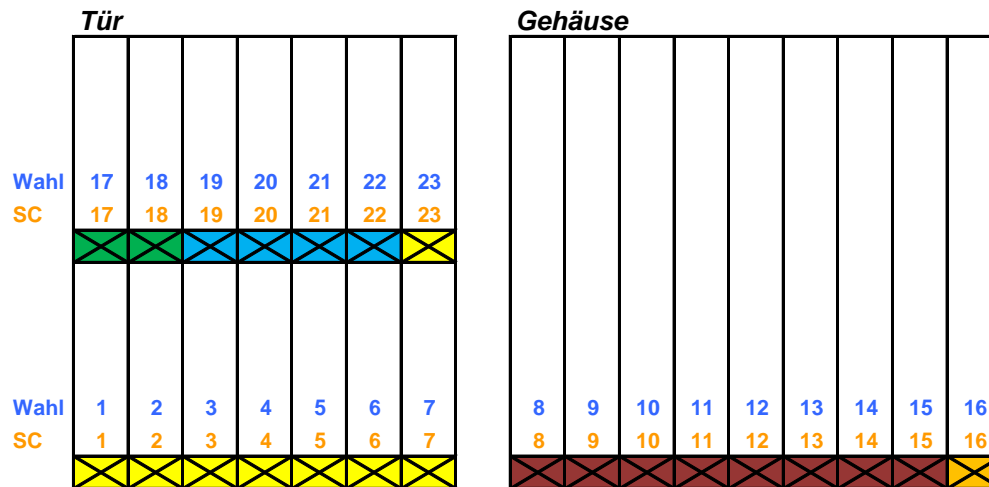







-  Motor, Anschluß an Stecker X 1101
-  Motor, Anschluß an Stecker X 1103
-  Motor, Anschluß an Stecker X 1104
-  Motor, Anschluß an Stecker X 1105
-  Motor, Anschluß an Stecker X 1106

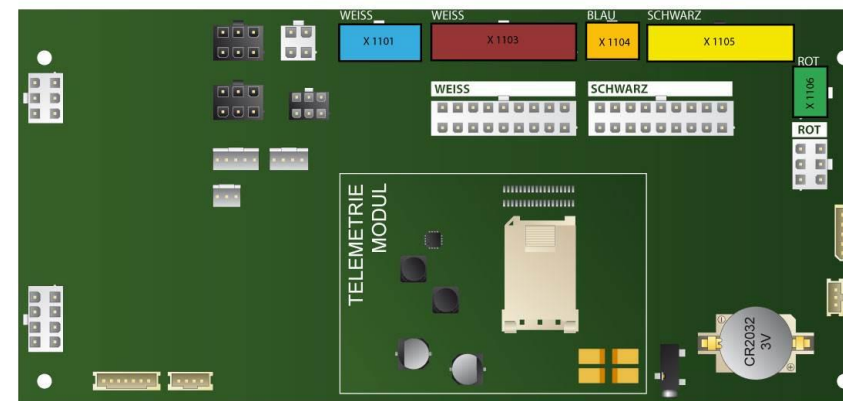


## 2.7 Jofemar Goya 16-23

**Bootmenü** **Goya 16-23**  
**Anzahl der Auswerfer** 23  
**Anzahl der Wahlmöglichkeiten** 23  
**Tastatur** 26 Tasten, davon 1x Rückgabetaaste und 2x Blindtasten

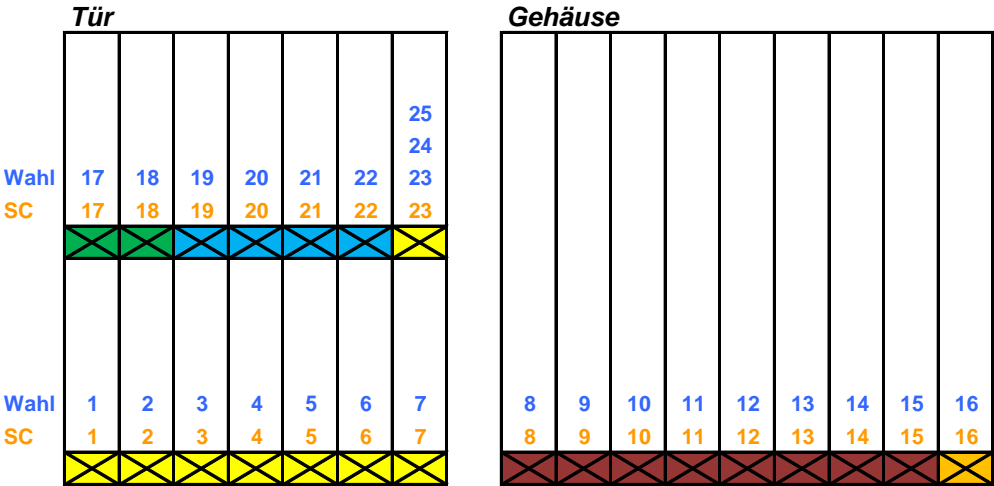







-  Motor, Anschluß an Stecker X 1101
-  Motor, Anschluß an Stecker X 1103
-  Motor, Anschluß an Stecker X 1104
-  Motor, Anschluß an Stecker X 1105
-  Motor, Anschluß an Stecker X 1106

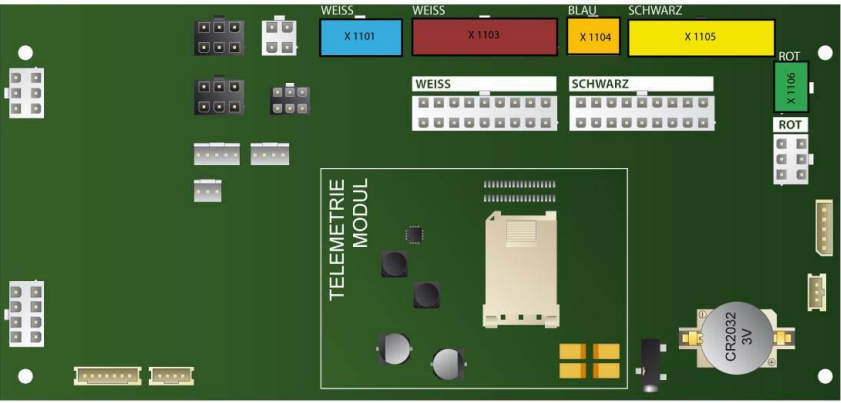


2.8 Jofemar Goya 16-25

- Bootmenü Goya 16-25  
 Anzahl der Auswerfer 23  
 Anzahl der Wahlmöglichkeiten 25  
 Tastatur 26 Tasten, davon 1x Rückgabetaste

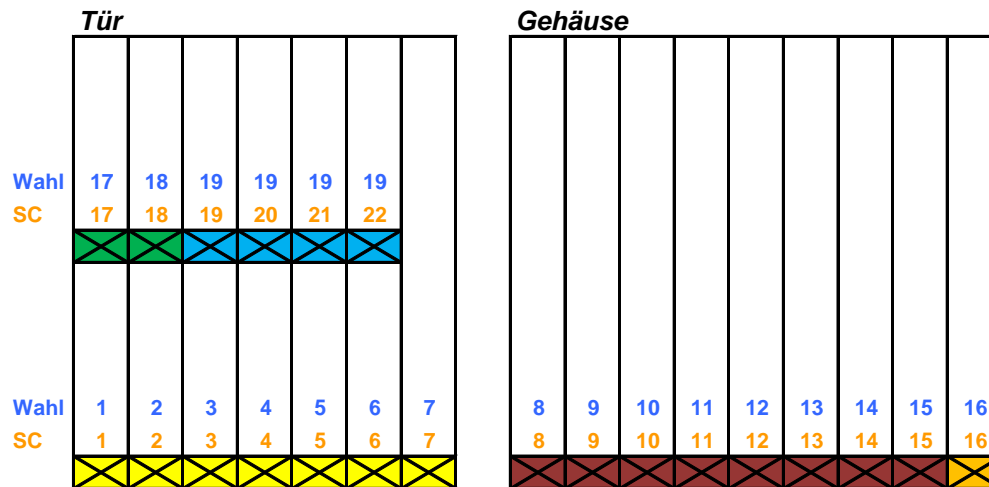







-  Motor, Anschluß an Stecker X 1101
-  Motor, Anschluß an Stecker X 1103
-  Motor, Anschluß an Stecker X 1104
-  Motor, Anschluß an Stecker X 1105
-  Motor, Anschluß an Stecker X 1106

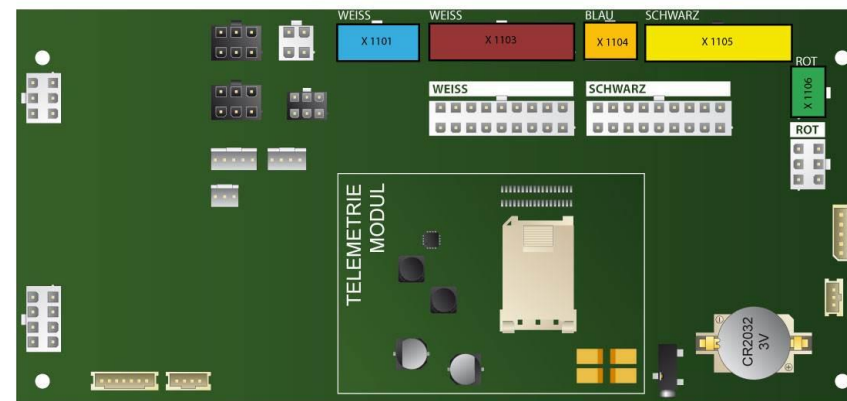


## 2.9 Jofemar Lux 22-19

**Bootmenü**  
**Anzahl der Auswerfer** Lux 22-19 22  
**Anzahl der Wahlmöglichkeiten** 19  
**Tastatur** 20 Tasten, davon 1x Rückgabetaste

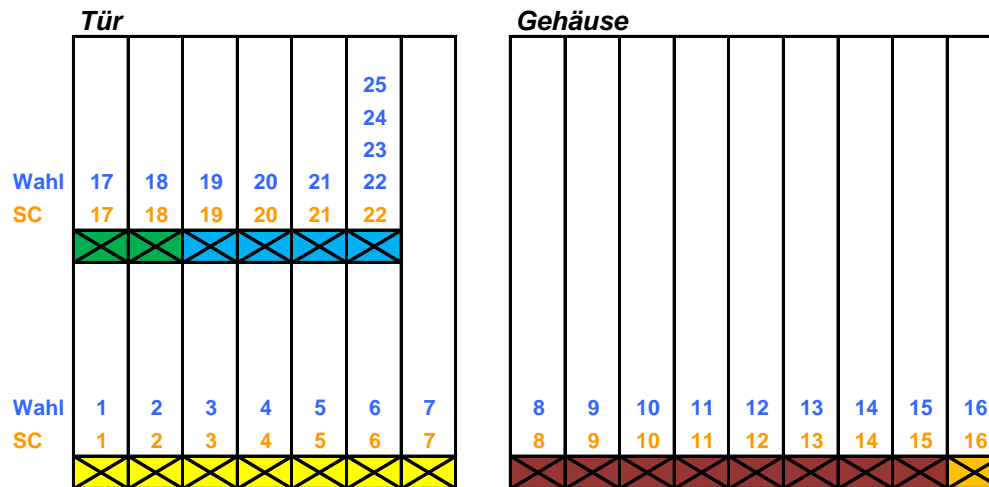







-  Motor, Anschluß an Stecker X 1101
-  Motor, Anschluß an Stecker X 1103
-  Motor, Anschluß an Stecker X 1104
-  Motor, Anschluß an Stecker X 1105
-  Motor, Anschluß an Stecker X 1106

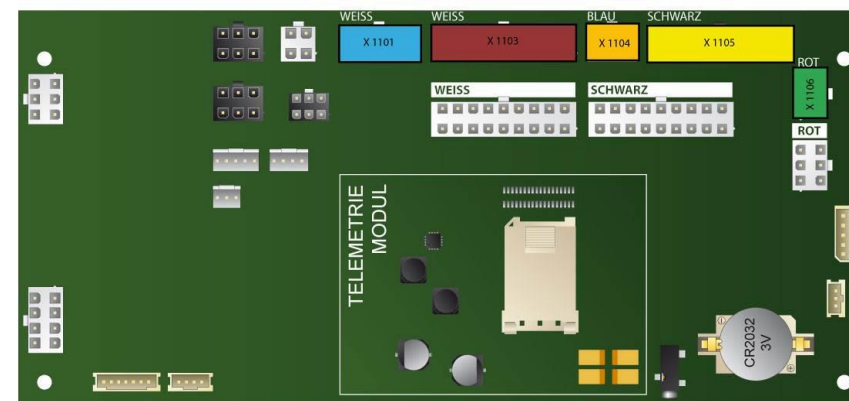


## 2.10 Jofemar Lux 22-25

**Bootmenü**  
**Anzahl der Auswerfer** Lux 22-25 22  
**Anzahl der Wahlmöglichkeiten** 25  
**Tastatur** 26 Tasten, davon 1x Rückgabetaste

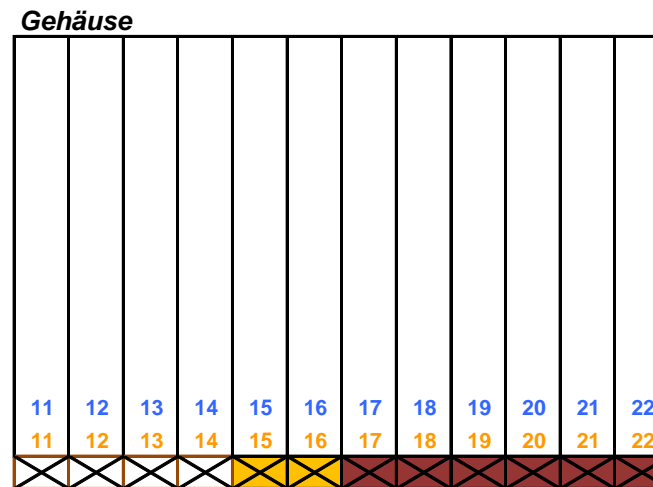
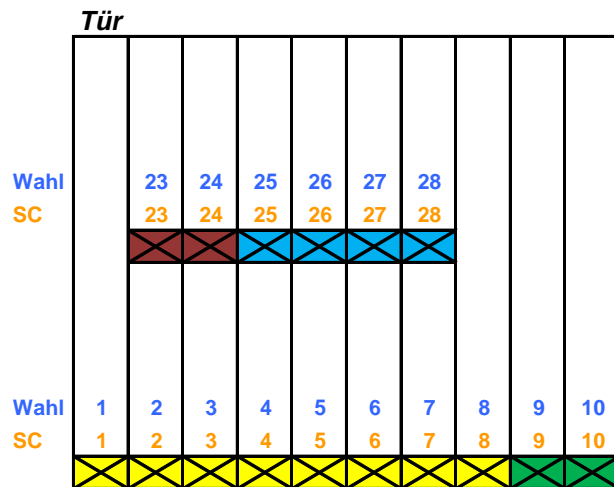








-  Motor, Anschluß an Stecker X 1101
-  Motor, Anschluß an Stecker X 1103
-  Motor, Anschluß an Stecker X 1104
-  Motor, Anschluß an Stecker X 1105
-  Motor, Anschluß an Stecker X 1106

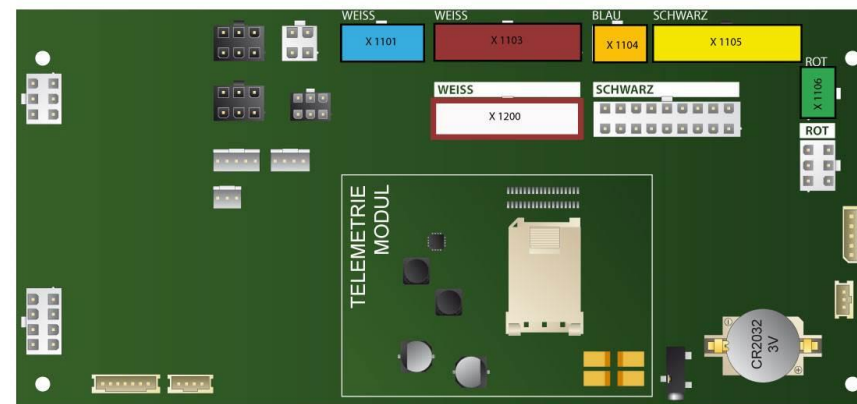


## 2.11 Jofemar Goya 22-28

**Bootmenü** Goya 22-28  
**Anzahl der Auswerfer** 28  
**Anzahl der Wahlmöglichkeiten** 28  
**Tastatur** 36 Tasten, davon 1x Rückgabebaste und 7x Blindtasten



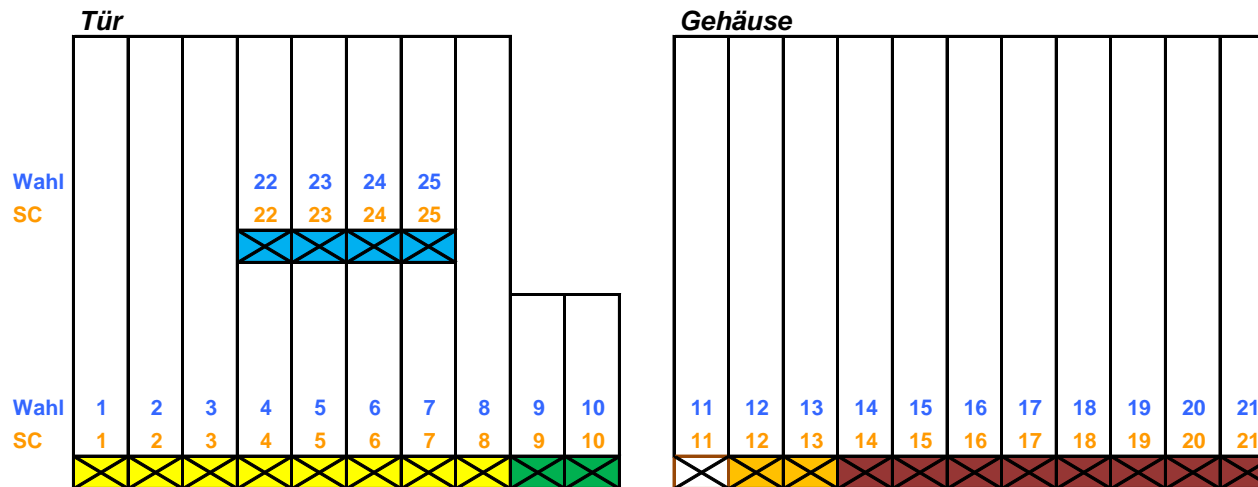
-  Motor, Anschluß an Stecker X 1101
-  Motor, Anschluß an Stecker X 1103
-  Motor, Anschluß an Stecker X 1104
-  Motor, Anschluß an Stecker X 1105
-  Motor, Anschluß an Stecker X 1106
-  Motor, Anschluß an Stecker X 1200









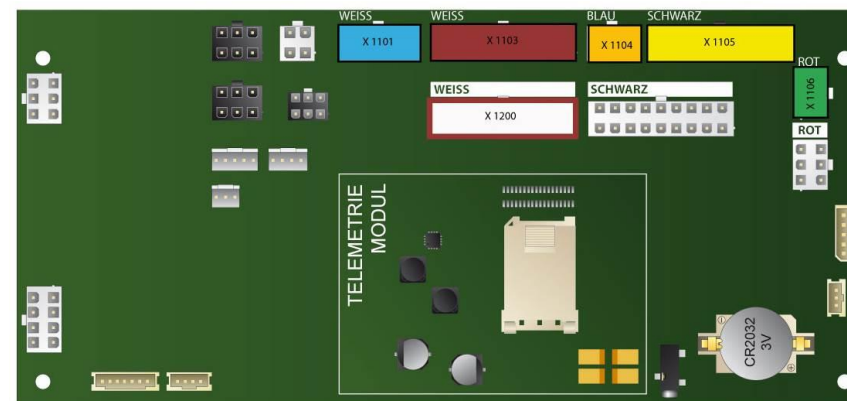


**2.12 Jofemar Baja 25-25**

**Bootmenü** **Baja 25-25**  
**Anzahl der Auswerfer** 25  
**Anzahl der Wahlmöglichkeiten** 25  
**Tastatur** 26 Tasten, davon 1x Rückgabetaste

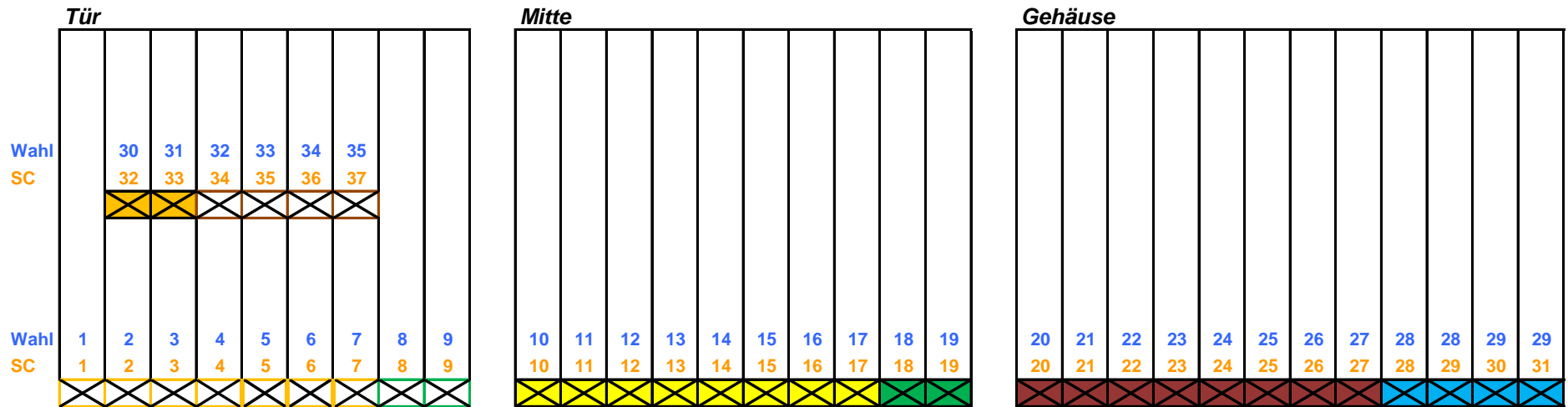










-  Motor, Anschluß an Stecker X 1101
-  Motor, Anschluß an Stecker X 1103
-  Motor, Anschluß an Stecker X 1104
-  Motor, Anschluß an Stecker X 1105
-  Motor, Anschluß an Stecker X 1106
-  Motor, Anschluß an Stecker X 1200



## 2.13 Jofemar Goya 32

**Bootmenü** Goya 32  
**Anzahl der Auswerfer** 37  
**Anzahl der Wahlmöglichkeiten** 35  
**Tastatur** 36 Tasten, davon 1x Rückgabetaste



-  Motor, Anschluß an Stecker X 1101
-  Motor, Anschluß an Stecker X 1103
-  Motor, Anschluß an Stecker X 1104
-  Motor, Anschluß an Stecker X 1105
-  Motor, Anschluß an Stecker X 1106
-  Motor, Anschluß an Stecker X 1200
-  Motor, Anschluß an Stecker X 1201
-  Motor, Anschluß an Stecker X 1202

